

# DUKE ELLINGTON!

(A MEDLEY FOR ORCHESTRA)

"Don't Get Around Much Anymore" By DUKE ELLINGTON and BOB RUSSELL

"Do Nothin' 'Till You Hear From Me" - Lyric by BOB RUSSELL

Music by DUKE ELLINGTON

"Sophisticated Lady" - By IRVING MILLS, MITCHELL PARISH and DUKE ELLINGTON

"It Don't Mean A Thing (If It Ain't Got That Swing)" -

By IRVING MILLS and DUKE ELLINGTON

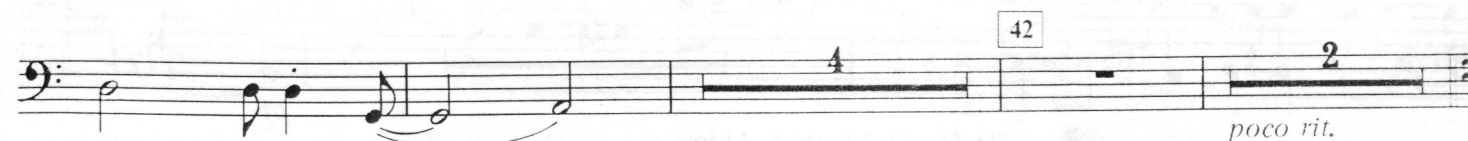
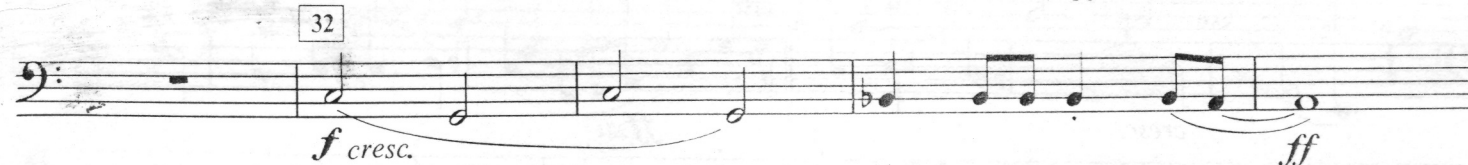
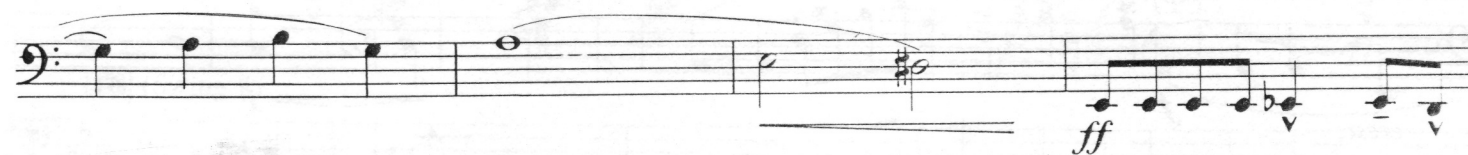
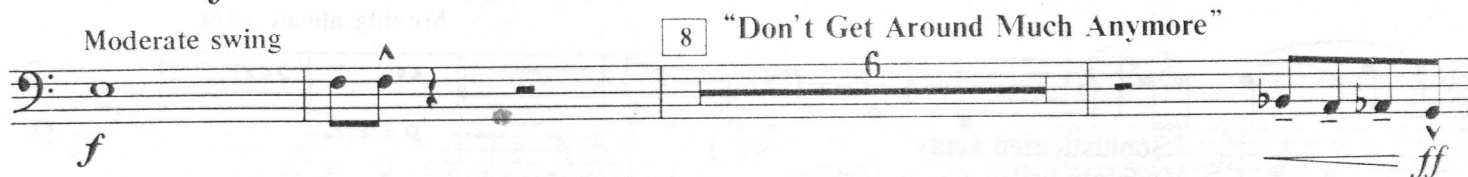
Arranged by CALVIN CUSTER

2nd BASSOON

Grandioso



Moderate swing



C0270B7X

"Don't Get Around Much Anymore" - Copyright © 1942 (Renewed 1969) ROBBINS MUSIC CORPORATION  
All Rights of ROBBINS MUSIC CORPORATION Assigned to EMI CATALOGUE PARTNERSHIP  
All Rights Controlled and Administered by EMI ROBBINS CATALOG, INC.

"Do Nothin' 'Till You Hear From Me" - Copyright © 1943 (Renewed 1971) ROBBINS MUSIC CORPORATION  
All Rights of ROBBINS MUSIC CORPORATION Assigned to EMI CATALOGUE PARTNERSHIP  
All Rights Controlled and Administered by EMI ROBBINS CATALOG, INC.

"Sophisticated Lady" - Copyright © 1933 by FAMOUS MUSIC CORPORATION and MILLS MUSIC, INC.  
Copyright Renewed 1960 and assigned to FAMOUS MUSIC CORPORATION and MILLS MUSIC, INC.

"It Don't Mean A Thing (If It Ain't Got That Swing)" - Copyright © 1932 by FAMOUS MUSIC CORPORATION and MILLS MUSIC, INC.  
Copyright Renewed 1959 and assigned to FAMOUS MUSIC CORPORATION and MILLS MUSIC, INC.

International Copyright Secured Made in U.S.A. All Rights Reserved

# "Do Nothin' 'Till You Hear From Me"

A bit slower

53

mf p p

Detailed description: This system contains the first two staves of music. The first staff begins with a 4-measure rest, followed by a melodic line starting on a half note G4. The second staff continues the melody with a half note G4, a dotted half note F#4, and a half note E4. Dynamics include mezzo-forte (mf) and piano (p).

Detailed description: This system contains the third and fourth staves of music. The third staff continues the melody with a half note D5, a dotted half note C#5, and a half note B4. The fourth staff continues with a half note A4, a dotted half note G4, and a half note F#4. Dynamics include piano (p) and mezzo-forte (mf).

61

p mf

Detailed description: This system contains the fifth and sixth staves of music. The fifth staff continues the melody with a half note E4, a dotted half note D4, and a half note C4. The sixth staff continues with a half note B3, a dotted half note A3, and a half note G3. Dynamics include piano (p) and mezzo-forte (mf).

69

cresc. ff

Detailed description: This system contains the seventh and eighth staves of music. The seventh staff continues the melody with a half note F#3, a dotted half note E3, and a half note D3. The eighth staff continues with a half note C3, a dotted half note B2, and a half note A2. Dynamics include crescendo (cresc.) and fortissimo (ff).

Moving ahead a bit

p cresc.

Detailed description: This system contains the ninth and tenth staves of music. The ninth staff continues the melody with a half note G2, a dotted half note F#2, and a half note E2. The tenth staff continues with a half note D2, a dotted half note C2, and a half note B1. Dynamics include piano (p) and crescendo (cresc.).

# "Sophisticated Lady"

Moderate ballad tempo (freely)

87

sfp molto rit. p p

Detailed description: This system contains the first and second staves of music. The first staff begins with a 5-measure rest, followed by a melodic line starting on a half note G4. The second staff continues the melody with a half note F#4, a dotted half note E4, and a half note D4. Dynamics include sforzando piano (sfp) molto ritardando (molto rit.) and piano (p).

mf

Detailed description: This system contains the third and fourth staves of music. The third staff continues the melody with a half note C4, a dotted half note B3, and a half note A3. The fourth staff continues with a half note G3, a dotted half note F#3, and a half note E3. Dynamics include mezzo-forte (mf).

95

cresc. f p

Detailed description: This system contains the fifth and sixth staves of music. The fifth staff continues the melody with a half note D4, a dotted half note C#4, and a half note B4. The sixth staff continues with a half note A4, a dotted half note G4, and a half note F#4. Dynamics include crescendo (cresc.), fortissimo (f), and piano (p).

103

cresc. ff

Detailed description: This system contains the seventh and eighth staves of music. The seventh staff continues the melody with a half note E4, a dotted half note D4, and a half note C4. The eighth staff continues with a half note B3, a dotted half note A3, and a half note G3. Dynamics include crescendo (cresc.) and fortissimo (ff).

4

pp

Detailed description: This system contains the ninth and tenth staves of music. The ninth staff continues the melody with a half note F#3, a dotted half note E3, and a half note D3. The tenth staff continues with a half note C3, a dotted half note B2, and a half note A2. Dynamics include pianissimo (pp).

# "It Don't Mean A Thing (If It Ain't Got That Swing)"

Moderately bright swing

121

mf

Detailed description: This system contains the first and second staves of music. The first staff begins with an 8-measure rest, followed by a melodic line starting on a half note G4. The second staff continues the melody with a half note F#4, a dotted half note E4, and a half note D4. Dynamics include mezzo-forte (mf).

sim.

1. 2.

Detailed description: This system contains the third and fourth staves of music. The third staff continues the melody with a half note C4, a dotted half note B3, and a half note A3. The fourth staff continues with a half note G3, a dotted half note F#3, and a half note E3. Dynamics include *sim.* (simplified) and first/second endings (1., 2.).

