

Viola

Louis Spohr
(1784-1859)

Concerto for Clarinet
No.1, Op.26

I.

Adagio

Ob.1

(timpani) *f*

Measures 1-7: Viola part in 3/4 time, key of B-flat major. Measure 1 has a whole rest. Measures 2-7 feature a melodic line with a dynamic of *f*. A timpani part is indicated with rests and a dynamic of *f*.

8

p *f* *p*

Measures 8-14: Viola part with a dynamic of *p*. Measures 9-13 feature a complex rhythmic pattern with a dynamic of *f*. Measure 14 returns to *p*.

15 **Allegro**

p

Measures 15-21: Viola part in 3/4 time, key of B-flat major. Measure 15 has a whole rest. Measures 16-21 feature a melodic line with a dynamic of *p*. There are two double bar lines with a $\langle \rangle$ symbol below the staff.

22

p *cresc.* *mf*

Measures 22-29: Viola part with a dynamic of *p*. Measures 23-29 feature a melodic line with a dynamic of *cresc.* leading to *mf*.

30

Solo Cl. *p*

Measures 30-35: Solo Clarinet part in 3/4 time, key of B-flat major. Measure 30 has a whole rest. Measures 31-35 feature a melodic line with a dynamic of *p*.

36

Measures 36-40: Viola part with a dynamic of *f*. Measures 36-39 feature a melodic line with a dynamic of *f*. Measure 40 features a triplet of eighth notes with a dynamic of *f*.

41

f *p* *f* *p*

Measures 41-43: Viola part with a dynamic of *f*. Measures 41-42 feature a melodic line with a dynamic of *f*. Measure 43 features a triplet of eighth notes with a dynamic of *f*.

44 **A**

pp

Measures 44-46: Viola part with a dynamic of *pp*. Measures 44-46 feature a melodic line with a dynamic of *pp*.

47

Measures 47-54: Viola part with a dynamic of *f*. Measures 47-54 feature a melodic line with a dynamic of *f*.

55

Measures 55-60: Viola part with a dynamic of *f*. Measures 55-60 feature a melodic line with a dynamic of *f*.

62

Solo Cl. Ve./Cb. *pp*

69 **B**

cresc.

76

sfz p cresc. sfz p

79

Solo Cl. *f p*

88 **C**

p *2 div.*

97

unis.

104

112 **D**

118

3

Viola

125

f *p*

131

f *p* *f*

134

p *f* *p* *f* *p*

138

f

141

p

146

pizz.

pp

151

E *arco*

p

159

Solo Cl.

3

167

p

5

Vin. I

178

183

f *ff* *pp*

191

200

F

p *cresc.* *mf*

209

Solo Cl.

p

215

220

G

3

Viola

228 Fl.1/Ob.1

mf *pp*

233

244 Solo Cl.

f *p* *p*

252 **H**

p *2 div.* *p*

261

p *unis.*

268

276 **I**

p

282

p

287

pp *f*

293

p *f* *p*

297

f *p* *f* *p*

300

f *p* *f*

304

f *p* *p*

308

pizz. *pp*

II. Adagio

1 Adagio

TACET

III. Rondo

Vivace

1
p



10

A

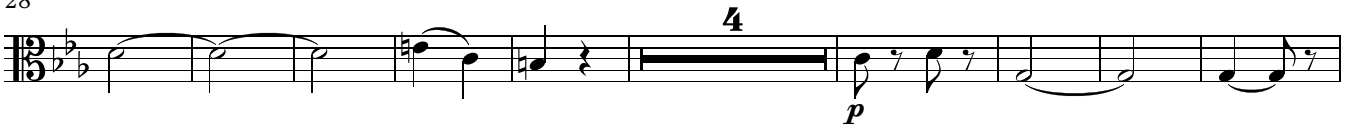


20



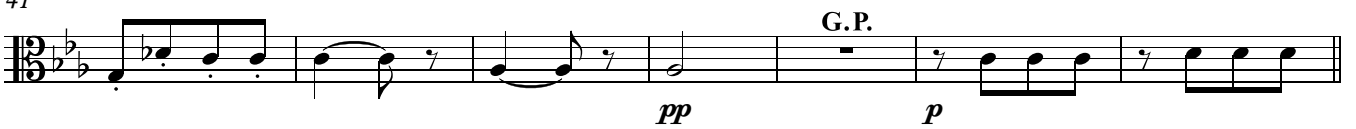
28

4
p



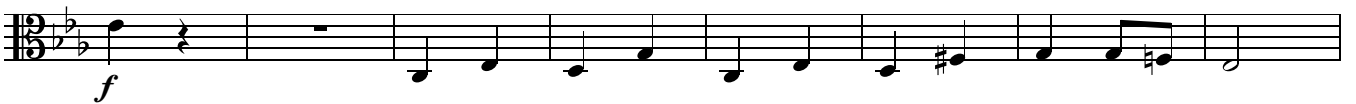
41

G.P.
pp *p*



48

f



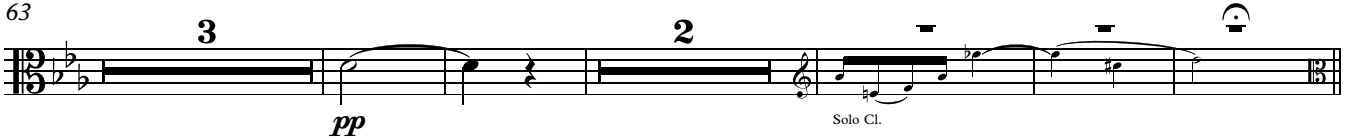
56

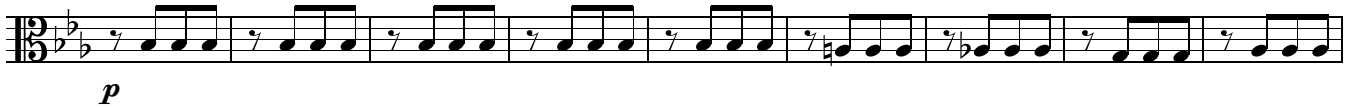
ff



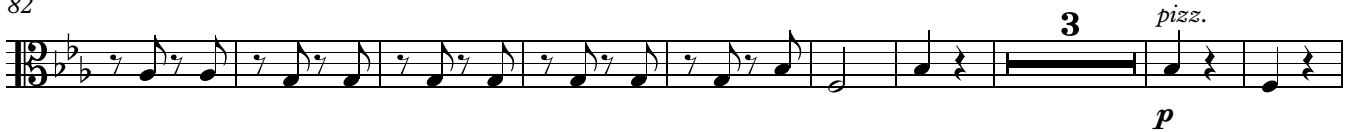
63

3 2
pp Solo Cl.



73 **B**

82



94



104



113



121

130 **D**

139



Viola

10

151 **E**
arco
p *f*

160 *f* G.P. G.P.

168 **F**
pp

178

186 *f* 2 Solo Cl.

194 **G**
p

203 3

213 *pizz.* *arco* 2 rit. Solo Cl.

223 **H** a tempo
p

231

239

239 *cresc.* *mf*

247

247 *pp* *f* *p* **I**

257

257 *rit.* *a tempo*

267

267 **2** Fls/Ob.1/2

278

278 *p* *f*

287

287 **G.P.**

295

295 **J** *pp* *f* *pp*

305

305 *poco a poco rit.*

312

312 *pp*