

2nd Bassoon

Louis Spohr  
(1784-1859)

Concerto for Clarinet  
No.1, Op.26

2nd Bassoon

I.

Louis Spohr  
(1784-1859)

**Adagio**

(timpani) *p* *f*

8

*p* *f* *p*

15 **Allegro**

*pp* 4

23

5 Solo Cl. *p*

31

7 Solo Cl. Fl.1/Ob.1 *fp*

43

A 7 Solo Cl. *fp*

55

*p*

61

B Fl.1 7 *p*

78 Solo Cl. **2** *f*

83 **3** **C** Solo Cl. *p*

90 **3** Solo Cl. *p*

97 **10**

112 **D** Ob. 1/2 **7** Fl. 1

125 **3** *f p f*

134 *p f p f p f*

141 **8** **E** Solo Cl. **7**

2nd Bassoon

160 Solo Cl. *p*

167 *p*

179 Fl.1/Ob.1 *f ff*

186 *f pp*

197 Solo Cl. *F* *f* Solo Cl. *pp*

209 Solo Cl. *p*

219 *p*

225 *G* *f*

237 Fl.1

*f*

245

2 3

H Solo Cl.

*p*

*f*

254

3 Solo Cl.

*p*

*f*

263

10

I Ob. 1/2

*p*

*f*

278

7 Fl.1

*p*

*f*

289

3

*f*

*f*

*p*

297

*f*

*p*

*f*

*p*

*f*

*p*

303

8

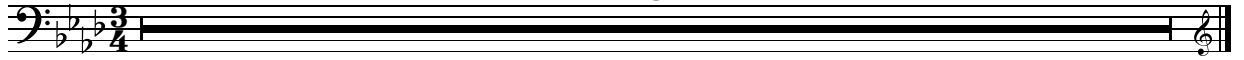
*f*

*p*

## II. Adagio

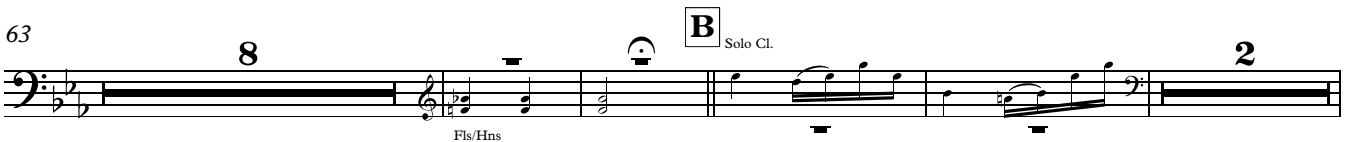
1 Adagio

TACET



## III. Rondo

Vivace



Fis/Hns

77

*p* *pp* 2

Detailed description: This musical staff covers measures 77 through 87. It begins with a dynamic marking of *p* (piano) and transitions to *pp* (pianissimo) around measure 82. The music consists of a series of quarter notes, some with slurs, and rests. A fermata is placed over the final measure (87), which contains a whole rest. A large number '2' is positioned above the staff at the end of the measure.

88

*f* *fp* *f* *fp* 7 rit.

Detailed description: This musical staff covers measures 88 through 99. It starts with a dynamic marking of *f* (forte) and alternates with *fp* (fortissimo piano) in a rhythmic pattern of eighth notes. A fermata is placed over the final measure (99), which contains a whole rest. A large number '7' is positioned above the staff at the end of the measure, and the word 'rit.' (ritardando) is written above the staff.

101 **C** a tempo

Solo Cl. *p*

Detailed description: This musical staff covers measures 101 through 110. It begins with a box containing the letter 'C' followed by the text 'a tempo'. The music is written in a treble clef and features a solo clarinet part, indicated by 'Solo Cl.' and a small square symbol below the staff. The dynamics range from *p* (piano) to *fp* (fortissimo piano). A fermata is placed over the final measure (110), which contains a whole rest.

111

3 *p* *cresc.*

Detailed description: This musical staff covers measures 111 through 122. It starts with a dynamic marking of *p* (piano) and includes a *cresc.* (crescendo) marking. The music consists of quarter notes with slurs. A fermata is placed over the final measure (122), which contains a whole rest. A large number '3' is positioned above the staff at the beginning of the measure.

123 **D**

Solo Cl. *p* 7 3

Detailed description: This musical staff covers measures 123 through 137. It begins with a box containing the letter 'D'. The music is written in a treble clef and features a solo clarinet part, indicated by 'Solo Cl.' and a small square symbol below the staff. The dynamics range from *p* (piano) to *fp* (fortissimo piano). A fermata is placed over the final measure (137), which contains a whole rest. Large numbers '7' and '3' are positioned above the staff at the beginning and end of the measure, respectively.

138

Ob.1 *f* *fp* *f*

Detailed description: This musical staff covers measures 138 through 144. It begins with a dynamic marking of *f* (forte) and includes *fp* (fortissimo piano) and *f* (forte) markings. The music is written in a treble clef and features an oboe part, indicated by 'Ob.1' above the staff. A fermata is placed over the final measure (144), which contains a whole rest.

145 **E**

*fp* *p* 2 6 Solo Cl.

Detailed description: This musical staff covers measures 145 through 154. It begins with a box containing the letter 'E'. The music is written in a bass clef and features a solo clarinet part, indicated by 'Solo Cl.' and a small square symbol below the staff. The dynamics range from *fp* (fortissimo piano) to *p* (piano). A fermata is placed over the final measure (154), which contains a whole rest. Large numbers '2' and '6' are positioned above the staff at the beginning and end of the measure, respectively.

159 *f* *f* G.P. G.P.

168 **F** 2 Bsn. 1 3

180 Solo Cl. *p* *pp*

186 *f* 3 *p*

194 **G** Solo Cl. *p* *p*

206 2 *f* *fp* *f* *fp*

214 rit. **H** a tempo 4 Bsn. 1

235 3 *p* *cresc.* 7

252 Solo Cl. **I**

*p*

261

*p*

Solo Cl.

273

*p*

284 Solo Cl.

*f*

291 **J** Solo Cl. G.P.

*f*

297

*f*

304 *poco a poco rit.*

*pp*

311

*pp*